



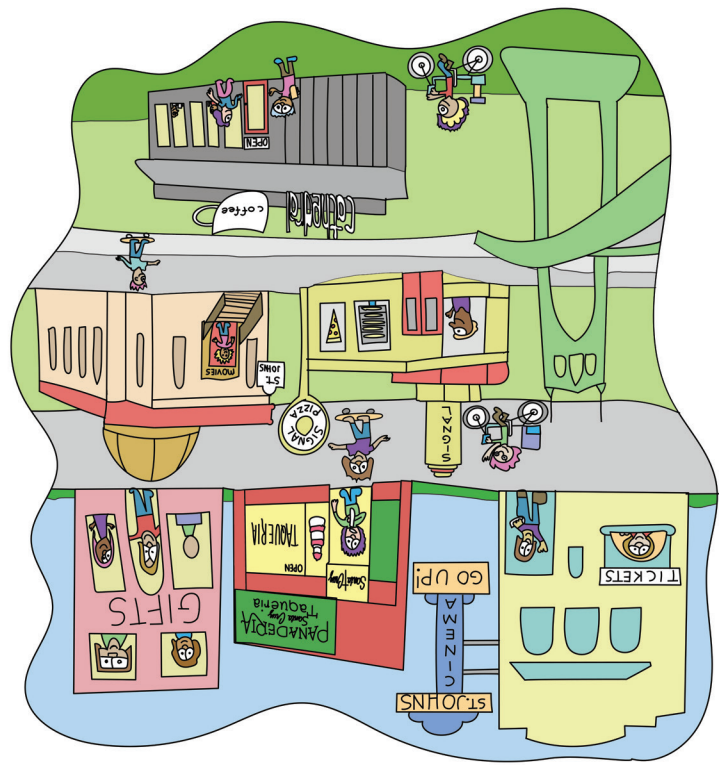
YOU BELONG HERE

UNIVERSITY OF PORTLAND

IDEALLY SITUATED IN THE HEART OF NORTH PORTLAND'S VIBRANT NEIGHBORHOODS, UNIVERSITY OF PORTLAND IS YOUR GATEWAY TO A COLLEGE JOURNEY FILLED WITH EVERY ADVENTURE IMAGINABLE.

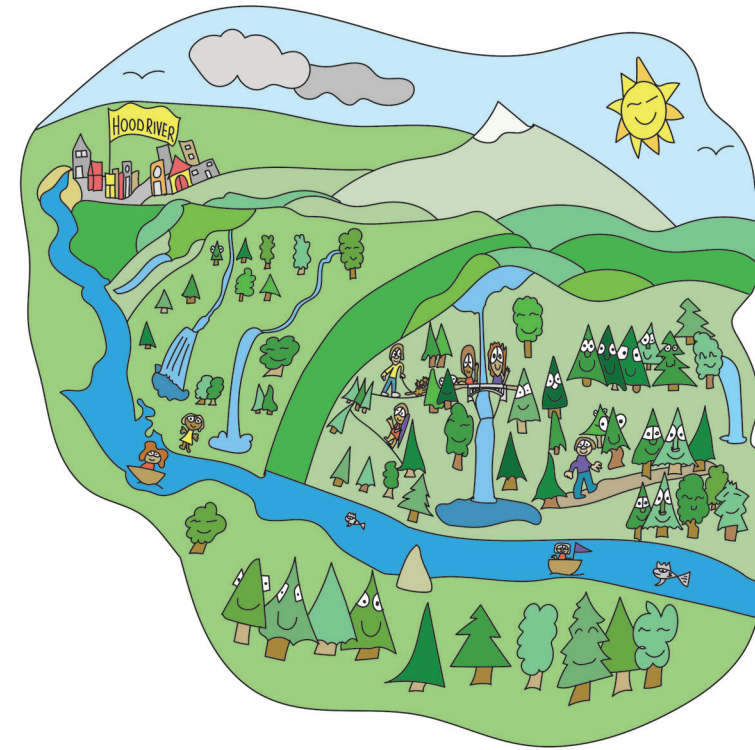
University
of Portland





This eclectic pocket of old-school charm sits just 2 miles north of campus at the east end of the gorgeously gothic St. Johns Bridge. Walk across and find the stairs to Forest Park. Or stay put and get cozy in one of the many cafes, play a round of disc golf at Pier Park, hit the taqueria for tacos and pan dulce, feed the friendly Belmont Goats, and catch dinner and a movie at McMenamins St. Johns Theater and Pub. When your dorm fridge is bare, Safeway, Fred Meyer, and New Seasons await.

ST. JOHNS



COLUMBIA RIVER GORGE

The hour-long trek requires some wheels, but when you're traveling through the nation's first scenic byway, the drive is half the fun. You'll be rewarded with more waterfall hikes than you can count, any outdoor adventure you crave from rafting to rock climbing, and the adorable town of Hood River, where your pizza comes with sweeping river views complete with kiteboarders jumping waves. Be sure to get a scoop at Mike's Ice Cream before you head home.



CHILES

The UP journey begins and culminates at the Chiles Center arena, from Convocation to Commencement, with all the concerts, events, and sports games in between. It's also the hub of our Athletic department.

University
of Portland

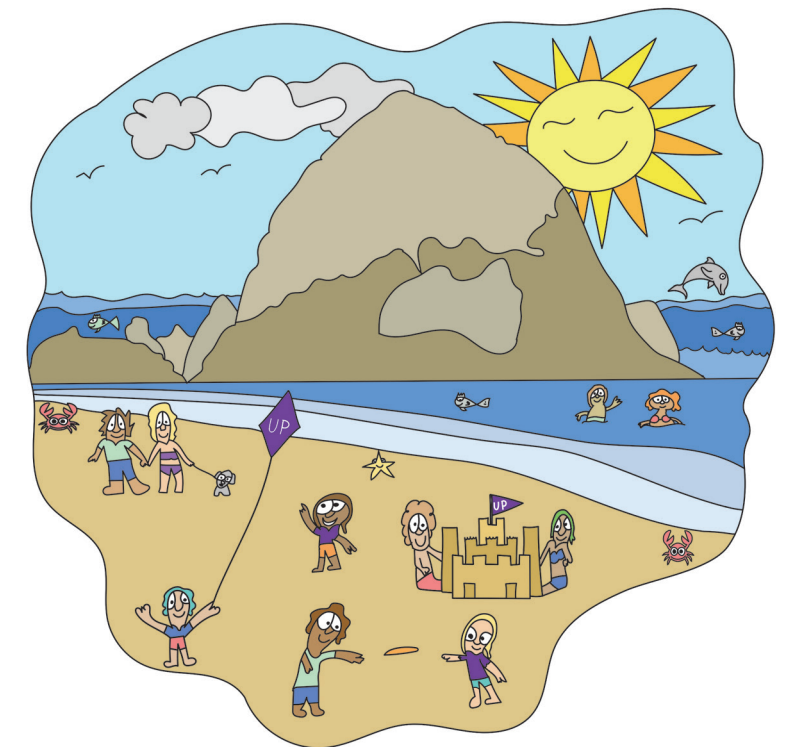


OFFICE OF ADMISSIONS
5000 North Willamette Blvd.
Portland, OR 97203-5798

Non-Profit Organization
U.S. Postage
PAID
Portland, Oregon
Permit No. 188

OREGON COAST

The Oregon Coast's natural wonders are unrivaled. Explore tide pools at Haystack Rock, hike through lush old-growth forests, fly a kite on the beach, savor saltwater taffy while you watch the sun set over the Pacific Ocean. Seaside and Cannon Beach are closest to Portland, but Astoria, Manzanita, and Rockaway Beach are easy day trips—so is the Tillamook Creamery, where you can sample a buffet of cheese while you watch it being made. And don't miss out on the ice cream!



MEET THE ARTIST

Artist, musician, and medieval historian—Dr. Bradley Franco is a polymath. Originally from New York, Dr. Franco received his PhD from Syracuse University and has been a professor at University of Portland since 2010. His history courses explore the value of the past in understanding the world, and examine relationships between power, religion, culture, and notions of justice.

Dr. Franco started doodling with his children on a cross-country flight in 2017. The doodles grew from a newfound hobby into a new way of seeing and experiencing the world through art. His work has been exhibited in the Buckley Center and Clark Library galleries, and he created an official NBA Gameday Poster for the Portland Trail Blazers. His distinct psychedelic style is especially suited to bringing Portland's diverse neighborhoods to life.

He lives a short walk from campus in North Portland with his wife and two daughters. Dr. Franco's hobbies include rooting for Portland's sports teams (the Blazers, Timbers, and Pilots), making music (on piano, guitar, ukulele, and trumpet), and traveling with family.

To see more of Dr. Franco's art, find him on Instagram @bradfrancoart.



TYPE DESIGN: Kenton font by Spoons Bradshaw was specially designed for this map.

We acknowledge the land on which we sit and which we occupy at University of Portland. "The Portland Metro area rests on traditional village sites of the Multnomah, Wasco, Cowlitz, Kathlamet, Clackamas, Bands of Chinook, Tualatin, Kalapuya, Molalla, and many other tribes who made their homes along the Columbia River creating communities and summer encampments to harvest and use the plentiful natural resources of the area" (Portland Indian Leaders Roundtable, 2018). We take this opportunity to thank the original caretakers of this land.

To learn more about Portland's diverse and vibrant Native community, please read *Leading with Tradition*, a document created by the Portland Indian Leaders Roundtable. (up.edu/inclusion)

Want to learn more about the land you occupy? Visit native-land.ca





1 NORTHEAST ALBERTA / NORTHEAST KILLINGSWORTH STREETS

Venture 4 miles east of campus and you can sample the world, from Ethiopian stews and Thai fried chicken to Southern biscuit sandwiches, and Australian cafe culture. These two parallel streets are home to some of Portland's most popular indie boutiques and restaurants, but it's not called the Alberta Arts District for nothing. Check out the eclectic art galleries and catch a show at the Alberta Rose Theatre.

2 NORTH MISSISSIPPI AND NORTH WILLIAMS AVENUES

Two of North Portland's most high-profile shopping and dining districts happen to be just a few miles away. These north-south avenues are just half a mile apart and loaded with hotspots: Destination food carts, acclaimed restaurants (including some of the city's best pizza), rocking music venues, and entire stores dedicated to fancy salt, obscure light bulbs, and even taxidermy. The area was once the heart of the city's African-American culture and you can explore its rich history through the Historic Black Williams Project's interpretive art walk along N. Williams Avenue.

3 DIVISION / HAWTHORNE / BELMONT

The neighborhoods centered around the east-west streets and boulevards feature renowned vintage stores, food cart pods, theaters, and eclectic shops. Division is a mix of beloved old-Portland staples and new upscale boutiques and restaurants. On Belmont, come for legendary brunch, stay for the bookstores, a nostalgic nickel arcade, and a famous video store. Don't miss Peacock Lane in December—a street just off Belmont where all the residents light up the block with holiday decorations.

4 ALPHABET DISTRICT / WASHINGTON PARK / FOREST PARK

One of Portland's oldest neighborhoods, the Alphabet District is rich with historic architecture, cozy cafés, restaurants, boutiques, and natural wonders. Every September, residents gather at Wallace Park to watch tens of thousands of swifts swirling and diving into an old chimney to nest on their migration south. The neighborhood is adjacent to both Washington Park and Forest Park, which offer miles of winding trails with stunning city views. Washington Park also features the Hoyt Arboretum, Japanese Garden, the Oregon Zoo, and is easily accessible by taking the MAX light rail's Red Line train.