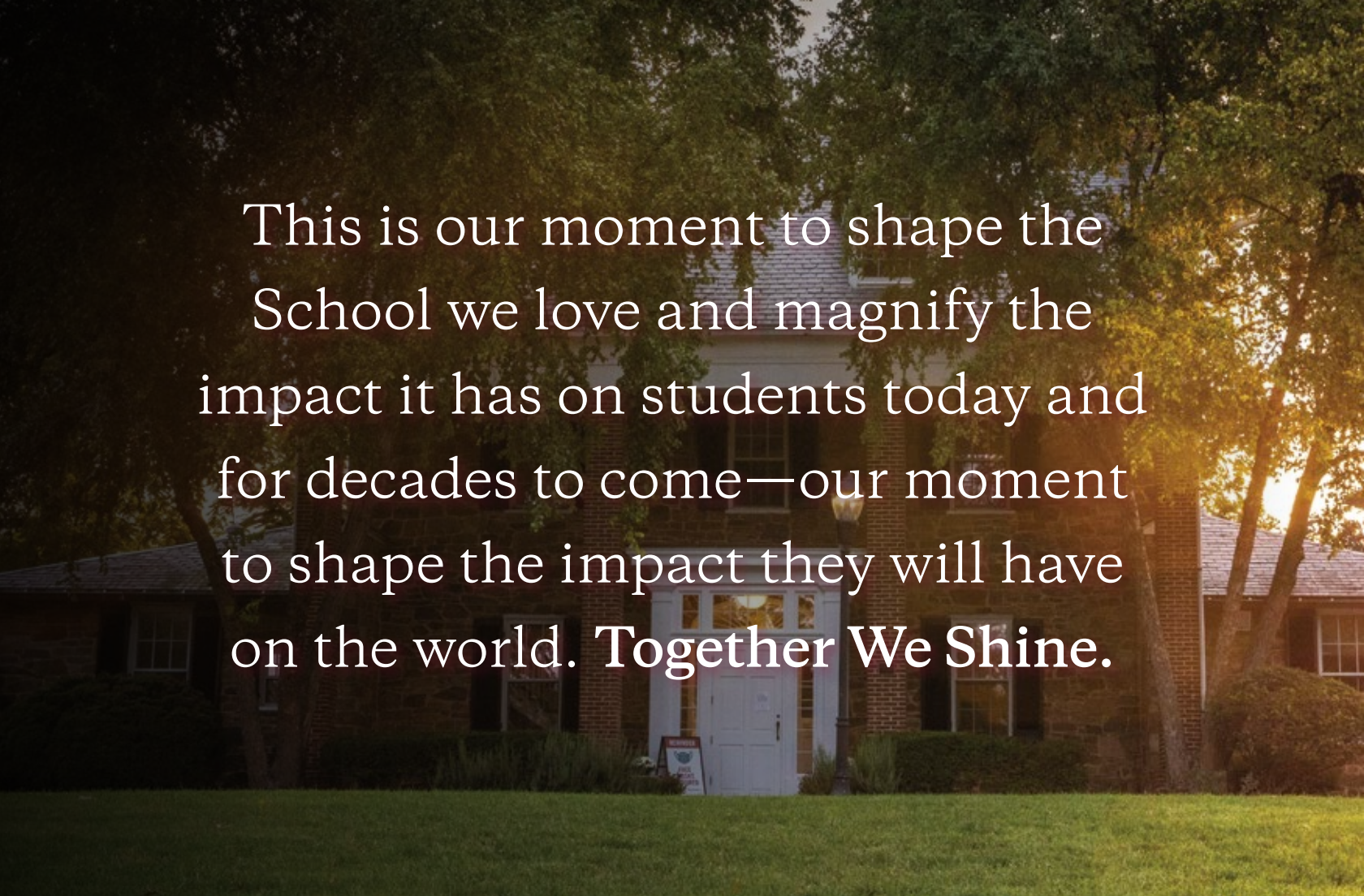


Together We Shine

It's our turn to light
the way forward.



This is our moment to shape the
School we love and magnify the
impact it has on students today and
for decades to come—our moment
to shape the impact they will have
on the world. **Together We Shine.**



In a world of worthy, urgent causes—where so much work needs to be done—Sidwell Friends School is committed to preparing a new generation of students with the knowledge, the courage, the conviction, and the relationships they need to create positive change.

We are launching a comprehensive campaign to transform our Washington, DC, campus, boost our financial aid resources, and invest in initiatives to deepen our students' ethical engagement with the world. Through this campaign, we will:

➤ **REIMAGINE THE FUTURE OF LEARNING**

Together, we can transform how, what, and where our students learn.

➤ **WELCOME A WIDER COMMUNITY**

Together, we can transform access to a Sidwell Friends education.

➤ **ETHICALLY ENGAGE WITH THE WORLD**

Together, we can transform the role we play in our city and the way we steward our planet.



<<<
**WATCH OUR
ANTHEM VIDEO**



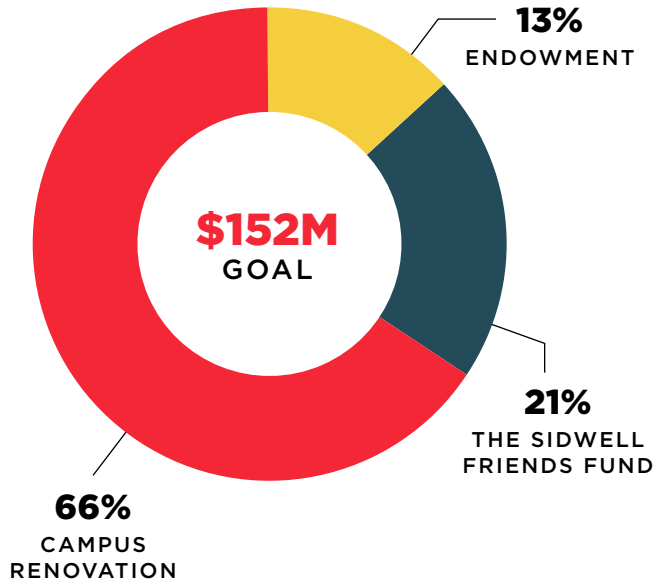
“

This campaign is a historic first step to unifying our campus and transforming the way our students learn and the way our faculty teach. We have a unique opportunity to impact future generations. I am eternally grateful that Sidwell Friends shaped my life in countless ways, and we now have a role in ensuring that legacy of learning, friendship, and action continues.”

DAVID MILNER '86
CAMPAIGN CO-CLERK

CAMPAIGN GOAL:

\$152 million



\$100 MILLION

UPTON CAMPUS RENOVATION

Once renovated, the Upton Street building will serve as the new Upper School and the all-School Center for Ethical Leadership and Center for Teaching and Learning. The building will add capacity to pursue knowledge in science, robotics, and research and will bring us one step closer to creating a unified, carbon-neutral campus.

\$20 MILLION

INCREASE OUR ENDOWMENT

The endowment provides critical funding to support faculty compensation, student financial aid, and special programs. There are more than 150 named endowed funds, including two new endowed faculty chairs in Spanish and Latin American Studies and African and African American Studies and a third, partially funded, in Asian American Studies.

\$32 MILLION

STRENGTHEN THE SIDWELL FRIENDS FUND

The Sidwell Friends Fund, the successor to the annual fund, supports the School's most important educational priorities: student financial aid, faculty development opportunities, and engaging student experiences.

Reimagine the Future of Teaching and Learning

At Sidwell Friends, teaching and learning are inextricably linked. Through this campaign, we will build our endowment to pay our extraordinary faculty and staff at the highest competitive levels. We will explore the best new models of teaching and learning. We will take the first vital step to unifying our campus, so that all our students can learn with and from each other on one campus, renewing Thomas Sidwell's vision of a Quaker school located in the nation's capital uniquely positioned to educate children to practice ethical leadership.



<<<
LEARN
MORE



THROUGH THE CENTER FOR TEACHING AND LEARNING

The new Center for Teaching and Learning will support our ever-curious faculty and enable teachers to continue to learn and share new and successful methodologies with one another.

THROUGH A NEW UPPER SCHOOL

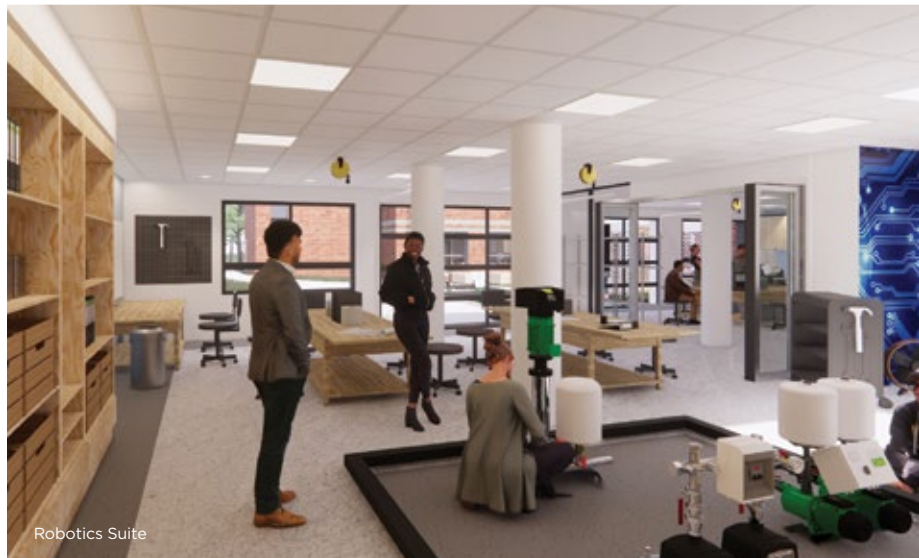
Thoughtfully, ethically, and sustainably designed, the new Upper School will open pathways for excellence with flexible teaching spaces, innovative labs and research spaces, and a reimagined library.

THROUGH ENDOWED FACULTY CHAIRS

New endowed faculty chairs in Spanish and Latin American Studies, African and African American Studies, and Asian American Studies will ensure that gifted teachers with deep expertise in these fields are a permanent part of the Sidwell Friends faculty.

THROUGH A UNIFIED CAMPUS

The opening of a new Upper School creates a singular opportunity to unify the School's three divisions on one campus to transform how we teach and learn through more cross-divisional collaboration and even greater common purpose.



Welcome a Wider Community

Deeply rooted in the nation's capital, Sidwell Friends shapes future leaders. This campaign will strengthen the School's endowment to ensure that a Sidwell Friends education is financially accessible to students from across the region. We will partner with and learn from communities, organizations, and institutions in our home city to help create a more just and better world.



<<
LEARN
MORE



THROUGH FINANCIAL AID

The campaign will make permanent our long-standing commitment to financial aid, ensuring that we can make a Sidwell Friends education accessible to the most talented students in the Washington, DC area, regardless of their family's ability to pay.

THROUGH PARTNERSHIPS

We will convene vital dialogues on race, education, and equity through our partnership with Howard University School of Education and through other initiatives. Future projects will explore Quakerism and interfaith dialogues, and create new student programming.

THROUGH ENDOWED FACULTY CHAIRS

Our new endowed faculty chairs help us ensure that our students gain an international, global, and multicultural education. Endowed chairs also attract and retain the best teachers and professionals to our school.

“

Students and faculty today benefit from the generosity and commitment of those who have come before us. As the first Quaker school in our nation’s capital, it’s important that we continue to invest in our campus, programs, and community. We are contributing now so future generations will continue to grow and thrive in an ever-changing and challenging world.”

CHARIS MENSCHER DRANT P '25, '27, '28
CAMPAIGN CO-CLERK



Ethically Engage the World

Guided by Thomas Sidwell's vision to educate each child to think independently and act ethically, we strive to discern deeper truths about ourselves and our common humanity, preparing students to let their lives speak. We will inspire our students to examine how they can exemplify these values while at Sidwell Friends and in the lives they build for themselves.



<<<
LEARN
MORE

THROUGH A SUSTAINABLE CAMPUS

Acting on our Quaker values of simplicity and environmental stewardship, we are creating a new Upper School by repurposing the Upton Street property, using reclaimed materials, tapping renewable energy, and restoring some of the original ecosystem.



THROUGH THE CENTER FOR ETHICAL LEADERSHIP

We will help faculty and students frame and explore ethics in the Quaker tradition, facilitate conversations that connect academic study to social challenges and opportunities, and encourage action through new programs. The new center will empower ethical leadership and agency in our students through community engagement, internships, and entrepreneurship.



THROUGH OUR PARTNERSHIP WITH HOWARD UNIVERSITY

The first Howard-Sidwell LEAD (Leadership in Equity, Action, & Discourse) Conference in 2022 brought together educators to evaluate intersections of race, equity, education, and workforce preparation. Future initiatives will explore Quakerism and interfaith dialogues, and create new student programming.

LEAD Leadership In
Equity, Action,
& Discourse

Your philanthropy directly supports educational innovation; new student experiences; our commitment to equity, justice, and community programs; investment in our faculty and staff; and our ability to serve as environmentally thoughtful stewards of our campus.

VISIT [SHINE.SIDWELL.EDU](https://shine.sidwell.edu) TO LEARN ABOUT OUR CAMPAIGN PROGRESS AND TO BECOME A PART OF THIS HISTORIC INITIATIVE.



Your gift magnifies the impact of this campaign.

CAPITAL GIFTS

Once renovated, the Upton campus will serve as the Upper School for students in grades 9-12. It also will house the all-School Center for Ethical Leadership and Center for Teaching and Learning. This renovated building is the vital first step toward the unifying our campus across all three divisions.

ENDOWMENT GIFTS

The Sidwell Friends endowment provides critical funding to support student financial aid, faculty compensation and professional development, and special programs. The school is fortunate to have more than 150 named endowed funds including two new fully funded endowed faculty chairs in Spanish and Latin American Studies and African and African American Studies. This campaign also will fund a third endowed faculty chair in Asian American Studies.

THE SIDWELL FRIENDS FUND*

We recently announced the launch of The Sidwell Friends Fund, the successor to the annual fund. Every dollar given to The Sidwell Friends Fund will go toward our most important educational priorities:

- Supporting students through financial aid
- Providing faculty with development opportunities
- Creating engaging experiences for our students

**During the campaign, all gifts to The Sidwell Friends Fund will count toward the campaign goal.*

»»
GIVE NOW



ANNUAL LEADERSHIP GIVING LEVELS

Gifts received to Sidwell Friends School at or above the leadership level (\$1,883 or more) account for a significant proportion of giving totals.

Sidwell Society
\$50,000 AND ABOVE

Head of School Society
\$25,000-\$49,999

Zartman Society
\$10,000-\$24,999

Founders' Society
\$5,000-\$9,999

Maroon and Gray Society
\$3,500-\$4,999

1883 Society
\$1,883-\$3,499

Generous donors who make a gift to the 1883 Society (\$1,883) or more receive special recognition in our Report on Philanthropy and an invitation to the annual Loyalty and Leadership Reception. Donors at higher giving levels are acknowledged as members of the giving societies shown above and receive additional invitations. Gifts are recognized each year during our fiscal year which is July 1 – June 30. Please contact an Advancement teammate to learn more or to discuss your philanthropy.

To discuss your philanthropy, please contact Tara Arras at arrast@sidwell.edu.

Get Involved

Together We Shine is a collaboration of Sidwell Friends leadership, current and former parents, alumni, current and former grandparents, and friends, and would never have reached this level of success without the tireless support of dozens of volunteers. We invite all Sidwell Friends families and friends to share their generous support and commitment to *Together We Shine* in whatever way they can, including by volunteering to help our entire community understand what the campaign is all about.

**TO LEARN MORE ABOUT
VOLUNTEERING OPPORTUNITIES,
PLEASE CONTACT ISABEL TRONCOSO
AT TRONCOSO1@SIDWELL.EDU.**



“*Sidwell Friends has educated thousands of students over the last 140 years, and I believe a Quaker education is needed now more than ever. My time at Sidwell was the most impactful period of my education. I knew that one day, when I was able, I would give back, significantly, to Sidwell so that others might benefit as I have.*”

JASON CARROLL '96
CAMPAIGN CO-CLERK

Volunteer Leadership

CAMPAIGN CLERKS & HONORARY LEADERSHIP

Jason Carroll '96

Co-Clerk

Charis Menschel Drant P '25, '27, '29

Co-Clerk

David Milner '86

Co-Clerk

Mark Jacobsen P '24, '27

Clerk of the Board

Arlene Kogod &

Robert Kogod P '76, '79, '80

Honorary Members

David P. Pearson '52

Honorary Member

STEERING COMMITTEE MEMBERS

Helen Colson '53, P '82, '84, '87

Hurley Duddy '81, P '17, '19

Meg Flax P '11, '13, '17

Marty Franks P '03

May Liang P '17, '20

Josh Miller P '27, '30

Mei Xu P '19, '21

Bryan Garman

Head of School

Tara Arras

Assistant Head of School

for Advancement

Russ Friedson

Assistant Head of School

for Finance & Operations

Frankie Brown

Assistant Head of School for Enrollment

and Financial Aid

Bill Burger

Chief Communications Officer

CURRENT PARENTS & GRANDPARENTS COMMITTEE

Charis Menschel Drant P '25, '27, '29

Co-Clerk

Judith Barnett GP '26, '29

Allan Berman P '89, '85,

GP '28, '29, '29

Steven Bralove '60, P '89, '92,

GP '23, '26, '29

Arika Cole P '28

Courtney Granville P '25, '27, '30

Jamie Hechinger '96, P '27, '29

Ade Heyliger P '29, '31

Mark Jacobsen P '24, '27

Andrew Kay P '22, '25

Benjamin Loewy P '33, '35

Yoshi Maisami P '33, '35

Belinda Nixon P '17, '23

Ebtissam Oraby P '21, '23, '26

Whit Peters P '87, '95, '98, '24, '25

Tara Primis P '18, '20, '23

Daniel Rosenthal P '25, '27, '30

Natasha Schooling P '24, '27, '29

Sergio Schmukler P '21, '25

Timothy Sparapani P '30

Manu Videki GP '26

Jin Wang P '22, '24

Robin Watkins P '24, '26

Jennifer Wood P '21, '23, '29, '32

ALUMNI COMMITTEE

Camilo Acosta '02

Co-Clerk

Brittany Toscano-Gore '03, P '36

Co-Clerk

Bruce Altevogt '94

Jason Carroll '96

Cat Dawson '04

Melissa del Aguila '01

Albert Gore '01, P '36

Paul Hodgdon '93

Meredith Karam '03

Marika Cutler Meyer '94, P '28, '31

David Milner '86

Ali Mohamadi '94, P '23, '26 '35

Natalie Randolph '98

Philip Rihm '09

Rowena Santiago '98 P '36

Emily Siegel '11

Laura Slover '86, P '26

Albert Small '09

Dev Talvadkar '01

PLANNED GIVING COMMITTEE

Helen Colson '53, P '82, '84, '87

Co-Clerk

Meg Flax P '11, '13, '17

Co-Clerk

Mara Bralove '89, P '26, '29

Ralph Bryant P '82, '84



Together We Learn.
Together We Reflect.
Together We Lead.
Together We Shine.

SIDWELL FRIENDS SCHOOL
3825 WISCONSIN AVE. NW | WASHINGTON, DC 20016
SHINE.SIDWELL.EDU